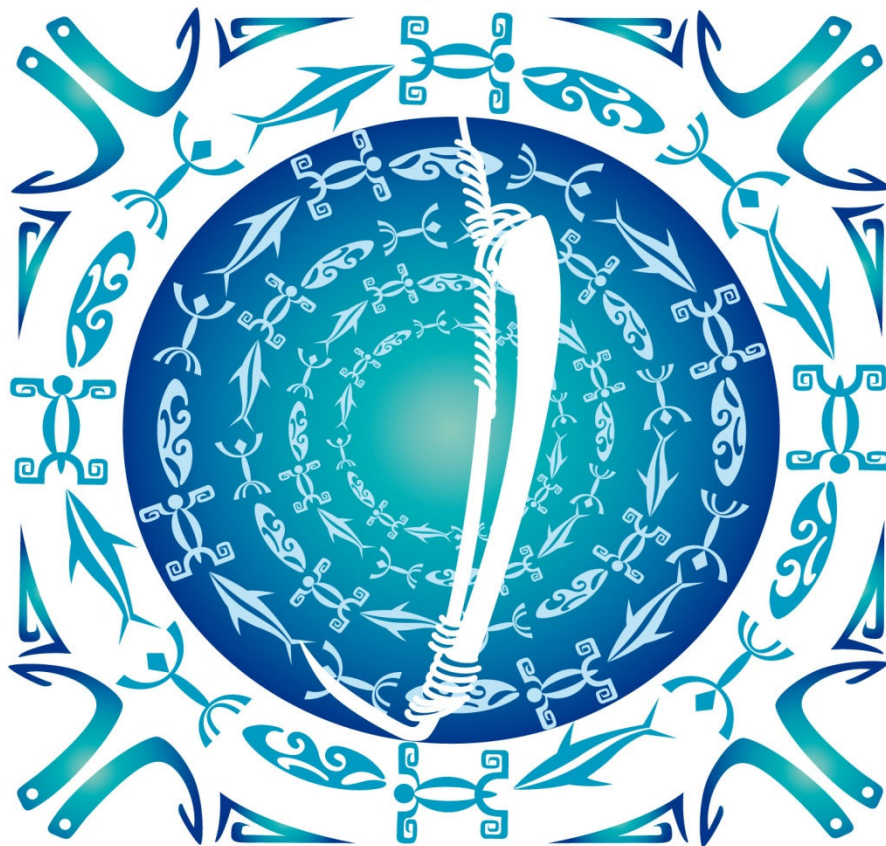


# SciCOFish

SCIENTIFIC SUPPORT FOR THE MANAGEMENT OF COASTAL AND  
OCEANIC FISHERIES IN THE PACIFIC ISLANDS REGION

## Second Steering Committee meeting report



**Noumea, 9 June 2012.**

*This project is funded by*



*This project is implemented by*



## CONTENTS

<b>Steering Committee report .....</b>	<b>1</b>
<b>Annex 1: description of activities 2011 .....</b>	<b>5</b>
<b>Annex 2: 2012 annual work plan .....</b>	<b>11</b>

The representatives of the P-ACP countries met on 9 June 2012 at SPC headquarters in Noumea, to hold the second Steering Committee of the EU-funded SciCOFish project.

Apologies were received from several P-ACP representatives who were unable to attend. Participants at the meeting comprised:

<b>P-ACP representatives</b>	
1. Valentin A. Martin	Federated States of Micronesia
2. Shalendra Singh	Fiji
3. Karibanang Tamuera Aram	Kiribati
4. David Orrukem	Palau
5. Joyce Samuelu Ah-Leong	Samoa
6. James Teri	Solomon Islands
7. Sione Vailala Matoto	Tonga
8. Sompert Gereva	Vanuatu
<b>Other members</b>	
9. Mechthild Kronen	Representative of the Head of Delegation of the EC for the Pacific
10. Mike Batty	Project supervisor
11. Anne Lefevre	Project administrator

The following staff involved in the project also attended:

12. Graham Nimoho	Manager, Fisheries Development Section, Vanuatu Fisheries
<b>SPC staff</b>	
13. Lindsay Chapman	Coastal Fisheries Programme Manager
14. John Hampton	Oceanic Fisheries Programme Manager

15. Ian Bertram	Coastal Fisheries Science and Management Adviser
16. Peter Williams	Principal Fisheries Scientist - Section management; data management; capacity building
17. Simon Nicol	Principal Fisheries Scientist - Section management; tuna tagging; bigeye tuna biology
18. Shelton Harley	Principal Fisheries Scientist - Section management; stock assessment; scientific advice
19. Etuati Ropeti	Coastal Fisheries Management Officer
<b>SciCOFish staff</b>	
20. Kalo Pakoa	Fisheries Scientist (invertebrates)
21. Franck Magron	Reef Fisheries Information Manager
22. Bruno Deprez	Fisheries Data Audit Officer
23. Siosifa Fukofuka	Observer training and support Officer

The participants had been provided with background documents: a brief SciCOFish project description, the “SciCOFish first steering committee meeting report” and the “Year 2 progress report and year 3 work plan”.

### **Brief on project design and status**

---

Mike Batty, Director of the Fisheries, Aquaculture and Marine Ecosystems Division and SciCOFish project supervisor, opened the meeting presenting the project.

He explained that the purpose of the steering committee is to give the P-ACP representatives an overview of the SciCOFish 2011 activities and 2012 work plan, and to receive guidance from countries to identify the priorities for 2013 (year 3 of the project) work programme.

### **SciCOFish coastal fisheries component – Component 2**

---

After the confirmation of Mike Batty as Chairman, Lindsay Chapman, Coastal Fisheries Programme Manager, presented the 2011 activities of the SciCOFish project’s component 2 and the planned activities for 2012. The objective of component 2 is that P-ACP governments, private sector and communities are equipped to monitor coastal fisheries, to provide scientific advice in support of sustainable management of these resources.

Ian Bertram, Coastal Fisheries Science and Management Adviser, then presented the work done on capacity building for invertebrate assessment, particularly for sea cucumbers, with examples in Tonga, Vanuatu and Solomon Islands. This was followed by some discussions on:

- the similarity of assessment methods done under the SciCOFish project and for the climate change baseline assessment;
- the indicators (density, size, species composition) used to evaluate the status of stocks, on which management decisions are taken;
- the benefit of moratorium on sea cucumbers, expressing that moratoria are not the best measure as it means a loss of income for coastal communities, but in some cases this is the last solution for resources management;
- the need for countries who carried out an invertebrates assessment this year, to make another assessment within the next years to evaluate the impact of management measures;
- the need for a regional approach to management of sea cucumber resources.

Requests for future assistance to be included in the 2013 work plan were submitted and could be summarised as:

➤ **Request 1:** assistance on sea cucumbers' assessment leading to management advice has been sought by Fiji, Federated States of Micronesia, Palau and Kiribati.

SPC recommended that countries send an official request to the Coastal Fisheries Programme and identify suitable candidates for training.

➤ **Request 2:** Vanuatu and Solomon Islands, who have benefited from capacity building in invertebrate resources assessment and are continuing the sea cucumber assessment at a national level, requested that in future SPC should return to conduct follow up on how local staff are progressing on assessments, data analysis and interpretation for management. Solomon Islands also requested assistance with training in enforcement of management measures for coastal resources.

➤ **Request 3:** Palau requested that training to be held there during the third quarter of 2012 focusing on sea cucumber should also cover trochus, clams and other invertebrates.

SPC confirmed the training can cover other invertebrates, to get the maximum information from one survey. For the ark shell clams that live in sandy habitats (soft bottom) this would require quadrat assessment methods, and can be covered also during the training.

➤ **Request 4:** Samoa and Tonga noted the work done on an Environment Impact Assessment (EIA) for sand mining in Kiribati and asked if this type of assistance and capacity building in conducting EIAs can be provided as they are often asked for to conduct EIA's or comment on EIA work being done in country and they have limited capacity in this area.

SPC will see shortly what can be done, as many countries are interested in EIA.

➤ **Request 5:** Samoa would like assistance with market surveys, noting that they already have a programme in place.

Trials of market surveys are already planned in 3 other countries but SPC will be able to conduct training in Samoa in 2013, and will aim to consult with Samoa before then to harmonise the approach with their current market survey techniques.

## **SciCOFish oceanic fisheries component – Component 1**

---

“Pacific ACP governments, the FFA and the WCPFC will be provided with scientific data, modeling and advice on oceanic fisheries to underpin their management decision making and strategic positioning” is the expected result of the SciCOFish component 1. John Hampton, Oceanic Fisheries Programme Manager, presented the achievements of the 2011 work plan and expected achievements of the 2012 plan.

A specific presentation on oceanic fisheries data auditing was done by Bruno Deprez, Fisheries Data Audit Officer.

Representatives had questions and comments that will help to build the 2013 work plan and the following requests were submitted:

➤ **Request 6:** Solomon Islands explained their need for debriefer training due to increasing number of observers coming with a large amount of data to be processed, as well as observer training for long-line fishing.

SPC confirmed that the need for additional observers and debriefers is common to most P-ACPs. SPC staff in consultation with national observer programmes are prioritizing the in-country training schedule according to needs, which are largely related to flag and in-zone fishing activity. SPC is making an effort to train more national trainers who will be available in future to provide national observer and debriefer training.

➤ **Request 7:** installation of TUBS database/software was requested for observer data storage by Solomon Islands, as Excel is the database currently used.

SPC explained that the TUBS software was initially developed for in-house processing of observer data and has been in production use by the OFP since January 2012. It is now being trialed for member-country use in PNG and will be available for other countries once the trial has been completed and any problems rectified. Roll-out to member countries is expected to begin in late 2012 if all goes well. In the meantime, SPC will continue to provide observer data processing and quality assurance services through positions funded by WCPFC and the NZ Aid Programme.

➤ **Request 8:** Palau asked for their national database audit.

SPC can audit 4 countries par year, so Palau can be planned for 2013.

## **European Commission recommendations**

---

The EC representative, Mechthild Kronen, congratulated countries and SPC staff for the overall good progress of the SciCOFish project, acknowledging there are a lot of demands for continuing the same kind of effort. She stressed the following points, as recommendations:

➤ **Recommendation 1:** as all donors, EU thinks it is very important to improve on communication and visibility to show the results, outputs and impacts of the activities implemented.

➤ **Recommendation 2:** synergies that already exist with FFA or WCPFC are encouraged, and could be expanded to cover projects working on climate change and coastal zone management.

➤ **Recommendation 3:** results oriented measurement of progress is important, for example it would be important that SPC has a mechanism to monitor the effectiveness of training in the long term.

➤ **Recommendation 4:** auditing quality control of oceanic data is appreciated and quality control is recommended for coastal data, especially if data is collated into a regional database.

The EC representative also asked about progress with the completion of manuals for coastal resource survey methods (behind schedule but to be finalized soon) and advised that a mid-term review of the project would be scheduled soon.

## **SciCOFish Steering Committee closure**

---

Mike Batty confirmed that SPC have all the EU recommendations in mind especially concerning communication on outputs. He thanked the participants to the meeting for their attendance and after about 3 hours of presentations and discussions the second SciCOFish Steering Committee meeting was declared closed.

## ANNEX 1: description of activities 2011

Performance and success indicators Target 2014	Planned activities for 2011	Progress /issues	Action required for 2012
<p><b>Overall objective:</b> conservation and sustainable use of coastal and oceanic fisheries resources in the Pacific Islands region</p> <ul style="list-style-type: none"> <li>Effort on yellowfin and bigeye tuna reduced to at least the level required to reach Fmsy (the fishing mortality associate with the maximum sustainable yield) or lower, for both species</li> <li>Tuna discards by purse seiners reduced to less than 1% of catch (&lt;12,000 t) confirmed by 100% observer coverage</li> </ul>		<ul style="list-style-type: none"> <li>Overall, effort on yellowfin tuna remains within overfishing benchmarks (related to the achievement of MSY). However, in the western equatorial region where the majority of exploitation occurs, the stock is considered to be fully exploited. For bigeye tuna, overfishing continues to occur, with the average fishing mortality in recent years (2006-2009) being about 40% above MSY levels. In 2010, there was a considerable reduction in fishing mortality, but it remains to be seen if this reduction will be sustained. Skipjack and South Pacific albacore remain in good condition, however recent increases in catch have results in catches now being close to MSY levels, and therefore restraint is now required in the fisheries for these stocks as well.</li> <li>Estimates of tuna discards by purse seiners were reported to the WCPFC Scientific Committee in 2011. For 2010, the tuna discard rate was 1.6%, a record low and significant reduction of the historical average of 3.2%. This reduction was achieved because of new WCPFC and PNA regulations regarding tuna discarding, which became effective in January 2010.</li> </ul>	<ul style="list-style-type: none"> <li>The OFP will assist WCPFC in the development of a new Conservation and Management Measure for skipjack, yellowfin and bigeye tunas to address these issues. Also, advice will continue to be given to SPC members individually, as well as to key regional and sub-regional groups (FFA, PNA, TVM).</li> <li>Continued efforts required to improve flow and processing of observer data, including real-time submission of key data. SPC will continue to coordinate observer training, but greater focus now given to data quality, debriefing and observer trainer certification.</li> </ul>

Performance and success indicators Target 2014	Planned activities for 2011	Progress /issues	Action required for 2012
<ul style="list-style-type: none"> <li>At least some management measures adopted in each of 5 coastal areas with measureable signs of recovery observed in baseline monitoring (indicators to be established under this project)</li> </ul>		<ul style="list-style-type: none"> <li>Ongoing monitoring activities for sea cucumber resources in Solomon Islands, Vanuatu and Marshall islands, with locally trained staff undertaking the monitoring.</li> <li>Monitoring in Vanuatu and Solomon Islands is to assess if the current moratorium in these two countries for sea cucumbers can be lifted once suitable management arrangements are in place.</li> </ul>	
<b>Project purpose:</b> to provide a reliable and improved scientific basis for management advice and decision making in oceanic and coastal fisheries			
<ul style="list-style-type: none"> <li>100% of project stock assessment results for 4 main tuna species accepted by WCPFC Scientific Committee and forwarded to full Commission for decision-making</li> <li>Observer coverage rates reach regionally-agreed levels by 2012 (100% for purse seine vessels) with no decrease in data quality</li> <li>At least 5 P-ACP countries adopt coastal fisheries management measures in line with project recommendations</li> </ul>		<ul style="list-style-type: none"> <li>Regional assessments were conducted for skipjack, yellowfin, bigeye and South Pacific albacore in 2011 and presented to the WCPFC SC8 meeting in August. SC8 used the results of all assessments in formulating its scientific advice to WCPFC.</li> <li>Observer coverage of purse seiners in 2010 is believed to have been close to 100%; however, delays in data transmission and limited resources for data processing have meant that the coverage of processed data available at SPC is in the region of 50% as of December 2011. This is considerably higher than coverage rates (around 10%) prior to 2010, and is expected to increase as further observer reports are submitted.</li> <li>Management advice to close the sea cucumber fishery in Tonga turned down</li> </ul>	

Performance and success indicators Target 2014	Planned activities for 2011	Progress /issues	Action required for 2012
		<p>by Minister with a reduced quota implemented, although government is reconsidering the advice and may close the fishery in 2012 given the current quota is not catchable.</p> <ul style="list-style-type: none"> <li>• Management plan for sea cucumber fishery in Marshall Islands being finalised as part of a fisheries bill with the projects providing assistance and advice.</li> <li>• Management advice and recommendations to be provided to Vanuatu and Solomon Islands once sufficient data is collected and analysed.</li> </ul>	
<b>Result 1:</b> P-ACP governments, the FFA and the WCPFC are provided with scientific data, modeling, and advice to underpin their management decision making and strategic positioning			
<b>1.1. Observer training</b>			
<p>300 observers trained, 10 observer trainers and 10 observer debriefers operational</p>	<ul style="list-style-type: none"> <li>• Continuation of observer training for all P-ACP countries.</li> <li>• Continuation of trainers' training.</li> </ul>	<ul style="list-style-type: none"> <li>• Ten observer courses in Samoa (Feb), FSM (Mar), Fiji (Apr), FSM (Apr-May), Solomon Islands (Jun), Kiribati (Aug), Kiribati (Aug-Sep), Kiribati (Sep), Marshall Islands (Oct-Nov), Vanuatu (Nov). A total of 139 observers were trained from the countries listed above and from Cook Islands, Nauru, Palau, Tonga and Tuvalu. Assistance was also provided for two nationally-run observer courses in PNG (Apr and Oct-Nov) and one course in Kiribati (May-Jun).</li> <li>• Eight observer trainers were trained, from FSM, Kiribati, Marshall Islands, PNG and Solomon Islands. An observer trainers workshop was held in Noumea in Jul-Aug: seven trainee trainers from these countries attended.</li> </ul>	<ul style="list-style-type: none"> <li>• Continuation of observer training for all P-ACP countries.</li> <li>• Continuation of trainers' training.</li> </ul>



Performance and success indicators Target 2014	Planned activities for 2011	Progress /issues	Action required for 2012
	<ul style="list-style-type: none"> <li>Continuation of debriefers' training.</li> <li>Organisation of Regional Observer Coordinators' Workshop.</li> <li>Production of training tools.</li> </ul>	<ul style="list-style-type: none"> <li>Two regional debriefer workshops were in Noumea (Mar) and FSM (Oct); 20 trainee debriefers attended from Cook Islands, FSM, Fiji, Kiribati, Marshall Islands, Nauru, Palau and PNG. Two "recognition of prior learning" workshops were held in PNG (Aug and Dec); 24 trainee debriefers attended from PNG, FSM, Fiji, Solomon Islands and Tonga. A workshop on the training of debriefers was held in PNG (Nov).</li> <li>ROCW in Honiara (Jun).</li> <li>Work on a longline observer training video was initiated in Fiji (Oct); a longline trip was organised and shooting conducted.</li> </ul>	<ul style="list-style-type: none"> <li>Continuation of debriefers' training.</li> <li>Organisation of 2012 ROCW.</li> <li>Production of training tools.</li> </ul>
<b>1.2. Integrated tuna fisheries databases</b>			
<p>National tuna fisheries databases operational in 15 P-ACPs</p> <p>Tuna data audits conducted for at least 10 P-ACPs</p> <p>14 P-ACP's report data to WCPFC as per their obligations</p>	<ul style="list-style-type: none"> <li>Ensuring that national databases are operational.</li> <li>Systematic in-country audits with data audit officer.</li> <li>Reviewing national reporting system to WCPFC to ensure that countries provide their data as per their obligation.</li> </ul>	<ul style="list-style-type: none"> <li>The national Tuna Fisheries Data Management System (TUFMAN) was updated to version 6.13 by the end of the year, with several new features implemented such as the VDS Management system. The latest version was distributed to all P-ACPs.</li> <li>Comprehensive Data audit tools developed including VMS-Logsheets coverage reporting.</li> <li>Two in-country audits conducted (FSM – March and Fiji – October), and one informal audit of TUFMAN data conducted at SPC/OFP (Solomon Islands TUFMAN).</li> <li>All P-ACPs submitted their 2010 data to the WCPFC before the 30<sup>th</sup> April 2011</li> </ul>	<ul style="list-style-type: none"> <li>Continued enhancement and support of TUFMAN. Continued country visits to provide training in using TUFMAN.</li> <li>Continued development of data audit tools.</li> <li>Four in-country data audits to be conducted.</li> <li>Continuation of support to P-ACPs with respect to WCPFC</li> </ul>

Performance and success indicators Target 2014	Planned activities for 2011	Progress /issues	Action required for 2012
		deadline (see <a href="http://www.wcpfc.int/staprov">http://www.wcpfc.int/staprov</a> ).	data reporting obligations.
<p>10 region-wide stock assessments (RWSA) for key tuna species, using the latest updated data, provided to decision-makers during 2010-2013</p> <p>1 regional and 10 national reports providing bioeconomic modelling advice</p>	<p><b>1.3. Bioeconomic modeling and national advice</b></p> <ul style="list-style-type: none"> <li>Continuation of RWSA production for region-wide advice on tuna fishery.</li> <li>Continuation of national fishery status report (NTFSR) production for national advice on tuna fishery.</li> <li>Introduction of the bioeconomic advice in the NTFSR.</li> </ul>	<ul style="list-style-type: none"> <li>4 stock assessments produced covering big eye, yellow fin, skipjack and south pacific albacore tunas.</li> <li>1 regional tuna fishery status report produced.</li> <li>NTFSR done for Solomon Islands, Cook Islands and initiated for Fiji including bio-economic modelling of long line fishery. 1 report late compared to the work plan due to late arrival of bioeconomic modeller and cut of findings of another position planned to work also on NTFSR.</li> <li>Inventory of fishing cost information to be used for input in the regional model completed. Small database developed to provide a historical overview of changes in fishing costs from all sources cited.</li> <li>Development of a draft economic data form for purse seiners in the WCPFC completed. When the form is finalised it will be distributed to countries in the region that have domestic based purse seine fleets. For distant water fishing fleets, the form will be distributed based on contact information recorded on the Regional Register.</li> <li>Attachment trainings at SPC HQ for Cook Islands and Solomon Islands.</li> </ul>	<ul style="list-style-type: none"> <li>Continuation of RWSA production for region-wide advice on tuna fishery.</li> <li>Evolution from NTFSR to Issue Specific National Reports being smaller reports for national advice on particular issues, proposing options for tuna management planning, including economic aspects.</li> <li>Dissemination of the economic data collection form and the timely gathering of this information for analysis.</li> <li>Development of a database to enter the economic information gathered from purse seiners.</li> <li>Capacity building at national level on stock assessment.</li> </ul>

Performance and success indicators Target 2014	Planned activities for 2011	Progress /issues	Action required for 2012
1 regional and 10 national reports (including Timor Leste) providing advice on tuna resource vulnerability to environmental variability including climate change	<ul style="list-style-type: none"> <li>Use of SEAPODYM to estimate the response at the regional and national levels to exploitation, management intervention and environmental variability.</li> <li>Continuation of reports production for providing advice on tuna resource vulnerability to environmental variability.</li> </ul>	<ul style="list-style-type: none"> <li>Skipjack, Albacore and Bigeye models validations completed; and yellowfin model validation partially completed.</li> <li>Regional and national reports are drafted.</li> </ul>	<ul style="list-style-type: none"> <li>Completion of all reports.</li> <li>Advice to ACP on particular fisheries management that they ask.</li> </ul>
	5,000 tuna tagged of which 80% are bigeye <sup>1</sup>	<p style="text-align: center;"><b>1.5. Validate key model parameters through tagging</b></p> <ul style="list-style-type: none"> <li>One-two month tuna tagging cruise focusing on bigeye tuna in the central Pacific.</li> <li>Implementation of tag recovery procedures.</li> </ul>	<ul style="list-style-type: none"> <li>Data incorporated in 2011 WCPFC stock assessments (Bigeye, Yellowfin and Skipjack tuna).</li> <li>4 papers provided to WCPFC documenting stock assessments and tuna tagging cruise achievements.</li> <li>Around 4,000 tunas tagged in 2011</li> </ul>
Country specific needs prioritised for all P-ACPs		<p style="text-align: center;"><b>2.1. Conduct stakeholder consultation</b></p> <ul style="list-style-type: none"> <li>Travel or correspond with at least 5 countries to identify management and monitoring needs and prioritise these.</li> <li>Incorporate management and monitoring priorities in at least 2 joint country strategy documents.</li> </ul>	<ul style="list-style-type: none"> <li>Seven countries were present at monitoring workshop to set national priorities.</li> <li>Management and monitoring priorities incorporated into draft PNG JCS document.</li> </ul>

<sup>1</sup> Suggested indicator: non provided in Contribution Agreement

Performance and success indicators Target 2014	Planned activities for 2011	Progress /issues	Action required for 2012
<p>Standard monitoring protocols implemented and sustained in at least 5 P-ACPs</p>	<p><b>2.2. Develop local capacity to implement field monitoring protocols</b></p> <ul style="list-style-type: none"> <li>• Undertake at least 2 national workshops/trainings on finfish UVC methodologies.</li> <li>• Undertake at least 3 national workshops/trainings on invertebrate survey methodologies.</li> <li>• Hold a workshop of invited experts to develop standards for different survey methodologies.</li> <li>• Finalise and publish a finfish UVC manual incorporating standards from workshop of experts.</li> <li>• Finalise and publish an invertebrate survey methodology manual incorporating outcomes of workshop of experts.</li> <li>• Develop draft survey manuals for market and/or creel surveys following the workshop of experts.</li> <li>• Field test the new market and/or creel survey in 2 countries and assess the methodology.</li> </ul>	<ul style="list-style-type: none"> <li>• Finfish training conducted in Kiribati (9 trainees) as well as assisting with training in Tuvalu (4 trainees) and Marshall Islands (5 trainees).</li> <li>• Invertebrate training undertaken in Vanuatu (5 trainees), Solomon Islands (8 trainees), Marshall Islands (6 trainees) Kiribati (9 trainees) and Tuvalu (5 trainees).</li> <li>• Workshop held in Nadi Fiji in May 2011 with a list of priorities made for methodologies.</li> <li>• Minimal progress made with this activity deferred to 2012.</li> <li>• Minimal progress made with this activity deferred to 2012.</li> <li>• Insufficient time to do this internally, so advertised this as a consultancy to be completed in the first half of 2012.</li> <li>• Activity deferred to 2012 when manual is available.</li> </ul> <p><b>Additional activities undertaken in 2011</b></p> <ul style="list-style-type: none"> <li>• <i>Assessment and training undertaken in Tuvalu (5 trainees) following an algal bloom outbreak.</i></li> <li>• <i>Assessment of marine resources as part of Environmental Impact Assessment in proposed sand mining site in Kiribati and training of 9 counterparts in survey methodologies.</i></li> <li>• <i>Assessment and training provided in</i></li> </ul>	<ul style="list-style-type: none"> <li>• Not many requests for finfish UVC training, so try to work in at least 1 country in 2012.</li> <li>• Continue invertebrate training in at least 3 countries in 2012 as this is in high demand.</li> <li>• Activity completed.</li> <li>• Finalise and publish a finfish UVC manual incorporating standards from workshop of experts.</li> <li>• Finalise and publish an invertebrate survey methodology manual incorporating outcomes of workshop of experts.</li> <li>• Supervise consultancy to develop a survey manual for market and creel surveys.</li> <li>• Field test the new market and/or creel survey in 2 countries and assess the methodology.</li> <li>• <i>Retain flexibility to undertake ad hoc requests as needed.</i></li> </ul>

Performance and success indicators Target 2014	Planned activities for 2011	Progress /issues	Action required for 2012
		<p><i>Samoa (7 trainees) on survey methods for spawning aggregations.</i></p> <ul style="list-style-type: none"> <li>• <i>Training of two Pacific Islander young professionals in finfish and invertebrate survey methodologies.</i></li> </ul>	
<p>Regional data repository maintained and national data provided for backup from at least 5 countries/fisheries</p>	<p><b>2.3. Develop and implement secondary data collection protocols</b></p> <ul style="list-style-type: none"> <li>• Regional database module for export data developed.</li> <li>• Export database module trialled in three countries with national databases established.</li> <li>• Database module for market and/or creel surveys developed and tested.</li> <li>• Database module for catch and effort of nearshore and coastal fisheries data developed and trialled.</li> <li>• Integration of current coastal fisheries management and monitoring document database into the new SPC document management system.</li> <li>• National export data provided by at least 1 country.</li> <li>• National data from monitoring training and subsequent surveys provided from at least 1 country.</li> </ul>	<p><b>2.3. Develop and implement secondary data collection protocols</b></p> <ul style="list-style-type: none"> <li>• Regional database for exports developed for trialling.</li> <li>• Database trialled in Vanuatu with other trials deferred to 2012.</li> <li>• Activity deferred to 2012 as manual and data forms needed first.</li> <li>• Activity merged with the market and creel survey database.</li> <li>• Work on the SPC document management system ongoing, so activity started in 2011, to be completed in 2012.</li> <li>• Data provided by Palau and Vanuatu to date.</li> <li>• Data provided by Tonga for analysis of sea cucumbers surveys.</li> </ul> <p><b>Additional activities undertaken in 2011</b></p> <ul style="list-style-type: none"> <li>• <i>Two sub-regional workshops were conducted on basic database skills.</i></li> <li>• <i>Purchased servers for 8 countries and configuring and software development for the servers for installation in countries in 2012.</i></li> <li>• <i>Development of an on-line training</i></li> </ul>	<ul style="list-style-type: none"> <li>• Database established but may need some fine-tuning after the trials.</li> <li>• Trialling of database to continue in at least 2 more countries before wider distribution.</li> <li>• Database module for market and/or creel surveys developed and tested.</li> <li>• To be addressed as part of market and creel survey work.</li> <li>• Activity to be completed in 2012.</li> <li>• Expand this to other countries.</li> <li>• Expand this to other countries.</li> <li>• <i>Conduct another set of sub-regional workshops on basic database skills.</i></li> <li>• <i>Install servers with software in at least 5 countries and provide initial training in-country.</i></li> </ul>

Performance and success indicators Target 2014	Planned activities for 2011	Progress /issues	Action required for 2012
		<i>programme for the identification of sea cucumber species.</i>	<ul style="list-style-type: none"> <li>• <i>Expand this on-line training programme to include identification of other species.</i></li> </ul>
Assessments and management recommendations given for at least 5 major coastal fisheries	<p style="text-align: center;"><b>2.4. Develop management advice</b></p> <ul style="list-style-type: none"> <li>• Assessment of finfish monitoring and/or survey data undertaken for 2 countries and management advice provided.</li> <li>• Assessment of invertebrate survey and/or monitoring data undertaken for 3 countries and management advice provided.</li> <li>• Attachments from at least 3 countries undertake training and analysis of their data at SPC for developing management arrangements.</li> <li>• Participate in regional and international meetings covering coastal fisheries monitoring and/or management.</li> </ul>	<p style="text-align: center;"><b>2.4. Develop management advice</b></p> <ul style="list-style-type: none"> <li>• Data analysis and management advice provided for Marshall Islands for aquarium fish. Management advice also provided to PNG on aquarium fish management and Kiribati on management of their bonefish fishery.</li> <li>• Data analysis and management advice provided to Tonga on their sea cucumber fishery, and preliminary management advice on sea cucumbers provided to Vanuatu, Kiribati, Solomon Islands and Marshall Islands.</li> <li>• Attachments from Tonga only (2 trainees) in 2011 as other countries still collecting data for analysis.</li> <li>• Staff participated and presented at regional FAO/SPC workshop on the management of sea cucumber fisheries.</li> </ul> <p><b>Additional activities undertaken in 2011</b></p> <ul style="list-style-type: none"> <li>• <i>Input provided to the development of management plans in the Solomon Islands for sea cucumber and Vanuatu of lobsters.</i></li> <li>• <i>Production and publication of information sheets on fisheries management for communities and a guide covering 16 families or species of finfish and invertebrates.</i></li> </ul>	<ul style="list-style-type: none"> <li>• Expand this to other countries.</li> <li>• Expand this to other countries.</li> <li>• Attachments from at least 3 countries undertake training and analysis of their data at SPC for developing management arrangements.</li> <li>• Undertake similar activities.</li> <li>• <i>Provide input to other fishery specific management plans as needed.</i></li> <li>• <i>Produce at least another 5 information sheets.</i></li> </ul>

Performance and success indicators Target 2014	Planned activities for 2011	Progress /issues	Action required for 2012
<b>3. Shared project activities</b>			
<b>3.1. Cross-cutting issues</b>			
<p>SciCOFish contribution to environmental sustainability, gender equality, good governance and human rights<sup>2</sup></p>	<p>Convert gender analysis results on inputs for 2011 and next AWP.</p>	<ul style="list-style-type: none"> <li>Edition and printing of the “Women in fisheries” report and brochure, to promote the women’s involvement in those careers.</li> <li>Environmental sustainability is a central thematic for all SciCOFish activities. In 2011 various monitoring trainings were organised, for example in Marshall Islands, as a mean to reach both the fisheries sustainable management and adaptation to climate change.</li> <li>Good governance is applied when working in coordination between SPC, governments, communities, to develop management plans for marine resources, as done this year for the sea cucumber in the Maskelyne Islands, Vanuatu.</li> </ul>	<ul style="list-style-type: none"> <li>Continuation of activities, contributing to environmental sustainability, gender equality, good governance and human rights</li> </ul>
<b>3.2. Coordination</b>			
<p>SciCOFish project run efficiently in terms of time and resources<sup>1</sup></p>	<ul style="list-style-type: none"> <li>Held of SciCOFish steering committee meeting.</li> <li>Engagement of activities with Timor Leste.</li> </ul>	<ul style="list-style-type: none"> <li>First SciCOFish steering committee held on the occasion of the SPC heads of Fisheries meeting: validation of year 1 report and year2 work plan.</li> <li>Timor Leste’s representatives participated this year to the SPC’s Heads of Fisheries meeting and to the other regional workshops funded by SciCOFish. The technical documents produced, eg. the “Guide and information sheets for fishing</li> </ul>	<ul style="list-style-type: none"> <li>Held of second SciCOFish steering committee meeting.</li> <li>Implementation of activities in Timor Leste.</li> </ul>

<sup>2</sup> Suggested indicator: non provided in Contribution Agreement

Performance and success indicators Target 2014	Planned activities for 2011	Progress /issues	Action required for 2012
	<ul style="list-style-type: none"> <li>Continuation of following of activities in terms of finances and plan.</li> </ul>	<p>communities” are being translated and will be sent to Timor Leste.</p> <ul style="list-style-type: none"> <li>Annual reporting on activities and finance, and planning done. Follow-up along the year.</li> </ul>	<ul style="list-style-type: none"> <li>Following-up the activities in terms of finances and plan.</li> </ul>
<p>Project results presented to ACP as tools –for fisheries management and decision making- and adopted!</p>	<p><b>3.3. Dissemination of results</b></p> <ul style="list-style-type: none"> <li>Communication on Scicofish activities.</li> <li>Communication on Scicofish results.</li> <li>Promotion of EU visibility.</li> </ul>	<p><b>3.3. Dissemination of results</b></p> <ul style="list-style-type: none"> <li>Update of the SPC media mailing list</li> <li>15 web articles, 8 articles in the SPC Fisheries Newsletter distributed to all member countries and partners, 1 article in Islands Business Magazine, on SciCOFish activities.</li> <li>Reports and policy briefs produced and distributed, eg. Pacific women’s participation in fisheries science and management, 2011 Tuna Fisheries Assessment.</li> <li>EU funding mentioned on all materials (videos, training books, posters, guides...) published this year. EU funding visible for all regional trainings with banners, and promotional items distributed to countries.</li> </ul>	<ul style="list-style-type: none"> <li>Communication on Scicofish activities.</li> <li>Communication on Scicofish results.</li> <li>Promotion of EU visibility.</li> </ul>



## ANNEX 2: 2012 annual work plan

Performance and success indicators Target 2014	Activities 2012	Results to be delivered – quantity, quality and time	2012 activity schedule
<p><b>Result 1:</b> P-ACP governments, the FFA and the WCPFC are provided with scientific data, modeling, and advice to underpin their management decision making and strategic positioning</p>			
<p><b>1.1. Observer training</b></p>			
<p>300 observers trained, 10 observer trainers and 10 observer debriefers operational</p>	<ul style="list-style-type: none"> <li>Continuation of observer training for all P-ACP countries.</li> </ul>	<ul style="list-style-type: none"> <li>Approximately 150 observers trained at 10 observer courses in FSM (Feb-Mar), PNG (Mar-Apr, with participants from Palau and Nauru), Fiji (Apr-May, with Samoa, Tonga and Tuvalu), Solomon Islands (May-Jun), Vanuatu (Jun-Jul, with Nauru, Niue, Palau and Tokelau), PNG (Jun-Jul), Marshall Islands (Sep), PNG (Sep-Oct, with Tuvalu), Kiribati (Oct-Nov) and Vanuatu (Nov-dec, with Cook Islands, Fiji and Nauru).</li> <li>Eight observer trainers trained.</li> <li>Four debriefer workshops held.</li> <li>ROCW held.</li> <li>The longline observer training video completed.</li> </ul>	<ul style="list-style-type: none"> <li>Quarter 1 to 4</li> </ul>
	<ul style="list-style-type: none"> <li>Continuation of trainers' training.</li> <li>Continuation of debriefers' training.</li> <li>Organisation of ROCW.</li> <li>Production of training tools.</li> </ul>	<ul style="list-style-type: none"> <li>Quarter 2</li> <li>Quarter 1 to 4</li> <li>Quarter 1</li> <li>Quarter 3</li> </ul>	
<p><b>1.2. Integrated tuna fisheries databases</b></p>			
<p>National tuna fisheries databases operational in 15 P-ACPs</p> <p>Tuna data audits conducted for at least 10 P-ACPs</p> <p>14 P-ACP's report data to WCPFC as per their obligations</p>	<ul style="list-style-type: none"> <li>Continued enhancement and support of TUFMAN. Continued country visits to provide training in using TUFMAN.</li> <li>Continued development of data audit tools.</li> </ul>	<ul style="list-style-type: none"> <li>Requests for enhancements to TUFMAN undertaken in a timely manner.</li> <li>Latest versions of TUFMAN distributed to all member countries in a timely manner.</li> <li>At least four (4) visits to provide TUFMAN training and further development work.</li> <li>Data Audit System completed, with minor enhancements as an ongoing activity.</li> </ul>	<ul style="list-style-type: none"> <li>Quarters 1 to 4</li> <li>Quarters 1 to 4</li> <li>Quarters 1 to 4</li> <li>Quarter 1; Quarters 1 to 4</li> </ul>

Performance and success indicators Target 2014	Activities 2012	Results to be delivered – quantity, quality and time	2012 activity schedule
	<ul style="list-style-type: none"> <li>• Four in-country data audits to be conducted.</li> <li>• Six data audits to be conducted remotely at SPC.</li> <li>• Continuation of support to P-ACPs with respect to WCPFC data reporting obligations.</li> </ul>	<ul style="list-style-type: none"> <li>• Four Trip and data quality reports.</li> <li>• Six data quality reports prepared and sent to countries</li> <li>• Support through the 6<sup>th</sup> Regional Tuna Data Workshop (April 2012).</li> </ul>	<ul style="list-style-type: none"> <li>• Quarters 1 to 4</li> <li>• Quarters 1 to 4</li> <li>• Quarter 2</li> </ul>
<b>1.3. Bioeconomic modeling and national advice</b>			
<p>10 region-wide stock assessments for key tuna species, using the latest updated data, provided to decision-makers during 2010-2013</p> <p>1 regional and 10 national reports providing bioeconomic modelling advice</p>	<ul style="list-style-type: none"> <li>• Continuation of RWSA production for region-wide advice on tuna fishery.</li> <li>• Evolution from NTSFR to Issue Specific National Reports being smaller reports for national advice on particular issues, proposing options for tuna management planning, including economic aspects.</li> <li>• Dissemination of the economic data collection form and the timely gathering of this information for analysis.</li> <li>• Development of a database to enter the economic information gathered from purse seiners.</li> <li>• Capacity building at national level on stock assessment.</li> </ul>	<ul style="list-style-type: none"> <li>• 4 RWSA for bigeye, yellowfin, skipjack and south Pacific albacore.</li> <li>• 1 regional tuna fishery status report.</li> <li>• 10 Issue Specific National Reports covering topics including impacts of FAD closures and interactions between artisanal and industrial fishing.</li> <li>• Completing an economic analysis using the data from the data collection survey and presenting it as part of the management option consultations.</li> <li>• 2 attachment trainings at SPC HQ.</li> </ul>	<ul style="list-style-type: none"> <li>• Quarters 2 and 3</li> <li>• Quarter 1 to 4</li> <li>• Quarter 1 to 4</li> <li>• Quarter 1 to 4</li> <li>• Quarter 4</li> <li>• Quarter 1 to 4</li> </ul>
<b>1.4. Ecosystem modeling of management and climate change</b>			
<p>1 regional and 10 national reports (including Timor Leste) providing advice on tuna resource vulnerability to environmental variability including climate change</p>	<ul style="list-style-type: none"> <li>• Preparation of national reports on vulnerability of tuna to environmental variability including climate change.</li> <li>• Preparation of regional reports on vulnerability of tuna to environmental variability including climate change.</li> <li>• Advice to ACP on particular fisheries management that they ask.</li> </ul>	<ul style="list-style-type: none"> <li>• Models validation completed.</li> <li>• 10 national reports completed.</li> <li>• 1 Regional report completed.</li> <li>• Technical support provided to ACPs on fisheries and climate change provided as requested.</li> </ul>	<ul style="list-style-type: none"> <li>• Quarter 1 to 4</li> <li>• Quarter 1 to 4</li> </ul>

Performance and success indicators Target 2014	Activities 2012	Results to be delivered – quantity, quality and time	2012 activity schedule
<b>1.5. Validate key model parameters through tagging</b>			
5,000 tuna tagged of which 80% are bigeye <sup>3</sup>	<ul style="list-style-type: none"> <li>Incorporation of tagging data into analyses that inform sub-regional and ACP countries fisheries management.</li> <li>1 tuna tagging cruise in the Central Pacific.</li> </ul>	<ul style="list-style-type: none"> <li>Data incorporated in WCPFC stock assessments.</li> <li>Information papers provided to WCPFC documenting tuna tagging cruise achievements.</li> <li>Incorporation of tagging data into analyses that inform sub-regional and ACP countries fisheries management.</li> <li>Completion of 1 tuna tagging cruise in the Central Pacific.</li> </ul>	<ul style="list-style-type: none"> <li>Quarter 1 - to 4</li> </ul>
<p><b>Result 2:</b> P-ACP governments, private sector and communities are equipped to monitor coastal fisheries to provide scientific advice in support of sustainable management of these resources. : P-ACP governments, private sector and communities will be provided with technical methods and training to monitor coastal fisheries, scientific advice to inform management decisions and development of in-country capacity to evaluate their effectiveness.</p>			
<b>2.1. Conduct stakeholder consultation</b>			
Country specific needs prioritised for all P-ACPs	<ul style="list-style-type: none"> <li>Travel or correspond with at least 4 countries to identify or update management and monitoring needs and prioritise these.</li> <li>Incorporate management and monitoring priorities in at least 3 joint country strategy documents.</li> </ul>	<ul style="list-style-type: none"> <li>Matrix of activities produced for at least 4 countries.</li> <li>Three JCS documents incorporate management and monitoring priorities.</li> </ul>	<ul style="list-style-type: none"> <li>1 country in each of the 4 quarters.</li> <li>1 country in each of quarters 2, 3 and 4.</li> </ul>
<b>2.2. Develop local capacity to implement field monitoring protocols</b>			
Standard monitoring protocols implemented and sustained in at least 5 P-ACPs	<ul style="list-style-type: none"> <li>Undertake at least 2 national workshops/trainings on finfish UVC methodologies or spawning aggregation survey techniques.</li> <li>Undertake at least 3 national workshops/trainings on invertebrate survey methodologies.</li> <li>Finalise and publish a finfish UVC</li> </ul>	<ul style="list-style-type: none"> <li>A minimum of 12 country staff trained and competent in conducting finfish UVC surveys.</li> <li>A minimum of 18 country staff trained and competent in conducting invertebrate surveys.</li> <li>Manual produced and distributed in the</li> </ul>	<ul style="list-style-type: none"> <li>1 country in quarter 1 and the second in quarter 3.</li> <li>1 Country in each of quarters 1, 2 and 3.</li> <li>Manual published in quarter 3</li> </ul>

<sup>3</sup> Suggested indicator: non provided in Contribution Agreement

Performance and success indicators Target 2014	Activities 2012	Results to be delivered – quantity, quality and time	2012 activity schedule
	<p>manual incorporating standards from workshop of experts.</p> <ul style="list-style-type: none"> <li>Finalise and publish an invertebrate survey methodology manual incorporating outcomes of workshop of experts.</li> <li>Develop draft survey manuals for market and/or creel surveys following the workshop of experts.</li> <li>Field test the new market and/or creel survey in 2 countries and assess the methodology and conduct capacity building.</li> <li>Mentor and train at least 2 Pacific Island young professional working in the section in conducting different survey methodologies.</li> <li>Undertake at least 1 ad hoc request by a country covering an urgent issue.</li> </ul>	<p>region.</p> <ul style="list-style-type: none"> <li>Manual produced and distributed in the region.</li> <li>Manual produced and distributed in the region.</li> <li>Manual tested in two countries and at least 12 country staff trained and competent in conducting market and/or creel surveys.</li> <li>Two young professionals with the skills and competency to conduct a range of surveys.</li> <li>At least 4 country staff trained and competent to conduct specific surveys as needed.</li> </ul>	<p>and distributed in quarter 4.</p> <ul style="list-style-type: none"> <li>Manual published in quarter 3 and distributed in quarter 4.</li> <li>Manual published in quarter 2 and distributed in quarter 3.</li> <li>Manual tested in quarter 2 with capacity building in one country in each of quarters 3 and 4.</li> <li>Ongoing process over full year.</li> <li>No specific timing due to this being reacting to an ad hoc request.</li> </ul>
<p>Regional data repository maintained and national data provided for backup from at least 5 countries/fisheries</p>	<p><b>2.3. Develop and implement secondary data collection protocols</b></p>		
	<ul style="list-style-type: none"> <li>Regional database module for export data updated and finalised.</li> <li>Export database module trialled in three countries with national databases established.</li> <li>Database module for market and/or creel surveys developed and tested.</li> <li>Integration of current coastal fisheries management and monitoring document database into the new SPC document management system.</li> <li>Undertake at least two sub-regional workshops on basic database skills.</li> </ul>	<ul style="list-style-type: none"> <li>Operational database module for export data.</li> <li>Three countries have trialled and are using the export database.</li> <li>Operational database module for market and creel surveys.</li> <li>All monitoring and management documents integrated into new system.</li> <li>At least 13 country staff trained and able to use coastal fisheries databases.</li> </ul>	<ul style="list-style-type: none"> <li>Database finalised in quarter 2.</li> <li>Two countries with operational export databases in quarter 3 and one in quarter 4.</li> <li>Database operational end quarter 2 or beginning of quarter 3.</li> <li>Integration complete in quarter 2.</li> <li>Sub-regional workshops scheduled for quarter 1.</li> </ul>

Performance and success indicators Target 2014	Activities 2012	Results to be delivered – quantity, quality and time	2012 activity schedule
Assessments and management recommendations given for at least 5 major coastal fisheries	<ul style="list-style-type: none"> <li>• Install servers with software in at least 5 countries and provide initial in-country training.</li> <li>• Attachment training in Noumea on database operations for staff from at least 2 countries.</li> <li>• National export data provided by at least 1 country.</li> <li>• National data from monitoring training and subsequent surveys provided from at least 3 countries.</li> <li>• Expand the current on-line training programme to include the identification of another 2 species groups.</li> </ul>	<ul style="list-style-type: none"> <li>• Servers fully operational in 5 countries and being used by the fisheries department staff.</li> <li>• A minimum of 4 country staff competent in database operation and using these skills at the national level.</li> <li>• National export data backed up at SPC for 1 country.</li> <li>• National monitoring and survey data backed up at SPC for 3 countries.</li> <li>• On-line training programme operational with 2 new species groups.</li> </ul>	<ul style="list-style-type: none"> <li>• Servers installed in 1 country in quarter 1, 2 countries in quarter 2 and 2 countries in quarter 3.</li> <li>• 2 attachments in quarter 2 and another 2 in quarter 3.</li> <li>• Scheduled for quarter 3.</li> <li>• Scheduled for 2 countries in quarter 2 and the other in quarter 3.</li> <li>• One species group on-line in quarter 3 and the other in quarter 4.</li> </ul>
<b>2.4. Develop management advice</b>			
	<ul style="list-style-type: none"> <li>• Assessment of finfish monitoring and/or survey data undertaken for 2 countries and management advice provided.</li> <li>• Assessment of invertebrate survey and/or monitoring data undertaken for 3 countries and management advice provided.</li> <li>• Attachments from at least 3 countries undertake training and analysis of their data at SPC for developing management arrangements.</li> <li>• Provide management advice for specific fisheries in at least 2 countries.</li> <li>• Participate in regional and international meetings covering coastal fisheries monitoring and/or management.</li> <li>• Produce at least 5 information sheets to assist community-based management in the region.</li> </ul>	<ul style="list-style-type: none"> <li>• Management advice and/or recommendations for finfish fishery in 2 countries provided.</li> <li>• Management advice and/or recommendations for invertebrate fisheries in 3 countries provided.</li> <li>• At least 6 national staff trained in data analysis and interpretation of data for management advice.</li> <li>• Specific fishery management plans and/or arrangements in place in 2 countries.</li> <li>• Regional and international meetings attended as needed.</li> <li>• 5 new information sheets available for regional use.</li> </ul>	<ul style="list-style-type: none"> <li>• First scheduled for quarter 2 and the other for quarter 3.</li> <li>• Scheduled for first in Quarter 1, second in quarter 2 and third in quarter 3.</li> <li>• 2 attachments planned for each of quarters 1, 2 and 3.</li> <li>• No schedule as this is usually based on ad hoc requests.</li> <li>• As needed during the year.</li> <li>• Scheduled for publication and distribution in quarter 2.</li> </ul>

Performance and success indicators Target 2014	Activities 2012	Results to be delivered – quantity, quality and time	2012 activity schedule
<b>3. Shared project activities</b>			
<b>3.1. Cross-cutting issues</b>			
SciCOFish contribution to environmental sustainability, gender equality, good governance and human rights <sup>4</sup>	<ul style="list-style-type: none"> <li>Continuation of activities, contributing to environmental sustainability, gender equality, good governance and human rights.</li> </ul>	<ul style="list-style-type: none"> <li>Continued contributions all over the year.</li> </ul>	<ul style="list-style-type: none"> <li>Continued activities all over the year.</li> </ul>
<b>3.2. Coordination</b>			
SciCOFish project run efficiently in terms of time and resources <sup>1</sup>	<ul style="list-style-type: none"> <li>Held of second SciCOFish steering committee meeting.</li> <li>Implementation of activities in Timor Leste.</li> <li>Following-up the activities in terms of finances and plan.</li> </ul>	<ul style="list-style-type: none"> <li>Validation of overall direction and policy of the project.</li> <li>1 staff will travel to Timor in 2012 to answer to the requests concerning fisheries management.</li> <li>Project report and 2013 workplan.</li> </ul>	<ul style="list-style-type: none"> <li>Quarter 1</li> <li>Quarter 3</li> <li>Quarter 4</li> </ul>
<b>3.3. Dissemination of results</b>			
Project results presented to ACP as tools –for fisheries management and decision making- and adopted <sup>1</sup>	<ul style="list-style-type: none"> <li>Communication on Scicofish activities and results</li> <li>Reinforcement of the communication skills of scientific staff.</li> <li>Promotion of EU visibility.</li> </ul>	<ul style="list-style-type: none"> <li>24 articles on SciCOFish activities and results published on the SPC website and SPC fisheries newsletter, 2 press releases sent to the media.</li> <li>24 scientific staff trained on presentation and writing for media and public.</li> <li>Distribution of promotional items for trainings, workshops and use of project equipment.</li> </ul>	<ul style="list-style-type: none"> <li>Continued activities all over the year.</li> <li>Quarter 1</li> <li>Continued activities all over the year.</li> </ul>

<sup>4</sup> Suggested indicator: non provided in Contribution Agreement